



INSTALLION - ER220WH-BU4 LED WITH DUAL HEADS

SAVE THESE INSTRUCTIONS - READ ALL INSTRUCTIONS CAREFULLY

⚠ WARNING

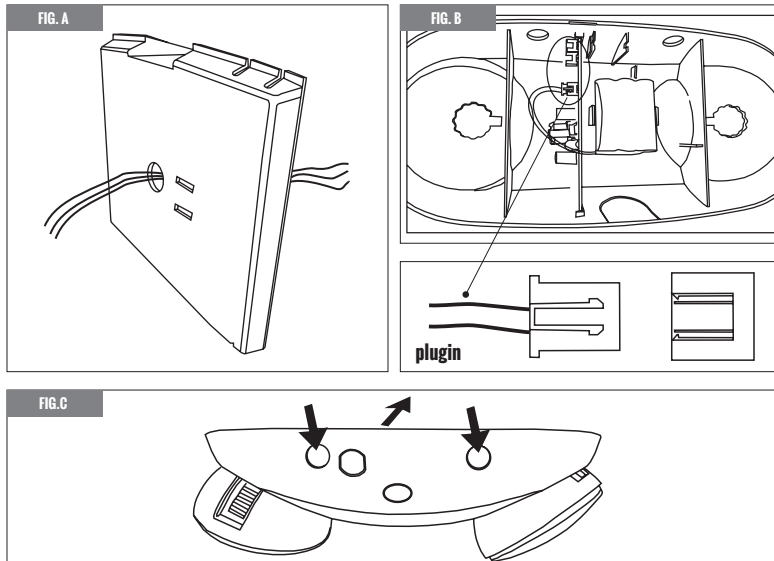


READ AND FOLLOW ALL SAFETY INSTRUCTIONS

- Disconnect power before performing work on electrical equipment.
- For indoor use only.
- Do not let the power cords touch hot surfaces.
- Do not install in hazardous locations or near gas or electric heaters.
- The use of auxilliary equipment not recommended by manufacturer, may cause and will void the unit's warranty.
- Do not use this equipment for other than its intended purpose.
- Servicing of this equipment should be performed by a qualified service technician.
- All electrical connections should be made in accordance with National and Regional electrical code.
- Equipment should be mounted in locations and at heights where it will not readily be subjected to tampering by unauthorized personnel.
- Allow battery to charge for 24 hours before first use.

Installation Instructions J-Box Mounting

- 1.1 Feed fixture leads through main bottom case and connect AC power supply (Fig A).
- 1.2 Connect wires through J-Box .Main bottom case on J-Box and secure with screws.
- 1.3 Connect battery only after continuous AC power can be provided to the unit(Fig B).
- 1.4 Align snaps and push housing directly onto main bottom case (Fig C). Apply continuous AC power and press "TEST" button to check light.



Installation Instructions Conduit

- 2.1 Secure main bottom case to wall surface. Route wires through hole in conduit flange and make conduit connection.
- 2.2 Connect battery only after continuous AC power can be provided to the unit (Fig B).
- 2.3 Align snaps and push housing directly onto main bottom case (Fig C). Apply continuous AC power and press "TEST" button to check light.

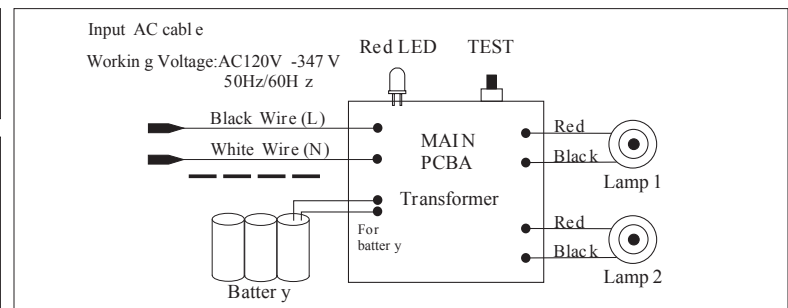
NOTE: To appear outside blue sleeve of terminal before connecting.
FLEXIBLE CONDUIT ONLY

⚠ IMPORTANT

Battery in this unit may not be fully charged at the time electrical connection is made. Let battery charge for atleast 24 hours. Then normal operation of this unit should take effect. To check, press the "TEST" button, The light inside the unit should turn on. The lamps, when used according to these instruction with this unit equipment, are in accordance with the requirements of CSA standard C22.2 NO.141

MODEL	2 x 2W	CIRCUITRY
120V AC 50/60 Hz	Input wattage: 4W	<ul style="list-style-type: none"> • Emergency Duration: > 2 hours • Recharge Time: 20 Hours • Output Wattage: ER220WH-BU4 (2 x 2W) • Light Source: Ultra Bright LED • Color Temperature: 6500K - 7500K • Ni-cd Battery: ER220WH-BU4 (2 x 2W)- 3.6V 2000mAh SC
	Input current: 0.02 A	
	Efficiency: 0.96 P	
277V AC 50/60 Hz	Input wattage: 4.6W	
	Input current: 0.007 A	
	Efficiency: 0.92 P	
347V AC 50/60 Hz	Input wattage: 5W	
	Input current: 0.007 A	
	Efficiency: 0.92 P	

Wiring Diagram



Operation

1. During an electrical power failure, the lamps will automatically come on for a minimum of 120 minutes.
2. To test, depress the "TEST" switch, the emergency lamps will illuminate. When the switch is released, the lamps will go off.